






Roxtec C LH doorvoer

Lichtgewicht doorvoer die met bouten op de constructie wordt bevestigd.

De Roxtec C LH is een compacte, lichtgewicht en zeer effectieve afdichtoplossing voor het doorvoeren van meerdere kabels of leidingen, verkrijgbaar in vijf verschillende maten. Het aluminium doorvoerframe wordt met bouten op de constructie bevestigd. De afdichtmodulen kunnen worden aangepast aan kabels en leidingen van verschillende diameters of worden gebruikt voor reservecapaciteit. De afdichtoplossing biedt bescherming tegen stof, vocht en brand en zorgt voor trillingsbestendige kabelbevestiging. Hierdoor is de afdichting uitstekend geschikt voor vloer- en wandtoepassingen in bijvoorbeeld rollend materieel.



-  Lichtgewicht
-  Ruimtebesparend
-  Biedt ingebouwde reservecapaciteit

Producteigenschappen



Brandvertragend



IP/UL NEMA

Installatiestructuur



Kasten en behuizingen



Metaal



Montagetype



Bouten

Specificaties en certificaten


Brand

-  E/EI-classificatie volgens EN 45545 E30
-  HL3 conform EN 45545-2 (R22, R23)

Dichtheid

-  IP 66 conform IEC 60529

Supports

-  Schok- en trillingscategorie 2 volgens IEC 61373

Afmetingen frame

mm/kg

De onderstaande frame-uitvoeringen zijn een beperkte selectie. Ga naar [roxtec.com](https://www.roxtec.com) voor het volledige assortiment frames en configuraties.

Titel	Frame-openingen	Vrije doorvoerruimte	Buitenafmetingen WxHxD	Afmetingen opening w x h	Gewicht	Art. nr.
C LH 3x1 ALU	1	60 x 120	120.2 x 218.5 x 30	76(+1/-1) x 174.5(+1/-1)	0.59	234431
C LH 4x1 ALU	1	120 x 120	180.2 x 218.5 x 30	136(+1/-1) x 174.5(+1/-1)	0.68	234434
C LH 5x1 ALU	1	60 x 180	120.2 x 276.5 x 30	76(+1/-1) x 232.5(+1/-1)	1	234432
C LH 6x1 ALU	1	120 x 180	180.2 x 276.5 x 30	136(+1/-1) x 232.5(+1/-1)	1	234435
C LH 7x1 ALU	1	60 x 240	120.2 x 336.5 x 30	76(+1/-1) x 292.5(+1/-1)	0.72	234433



Gegevens van afdichtcomponenten

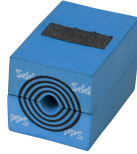
Afdichtcomponenten



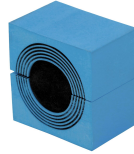
Lubricant Blue



C Wedge en Wedgekit



CM PPS module met Multidiameter™



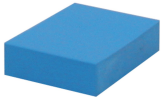
CM module met Multidiameter™



C fixeerplaat



fixeertools



CM compensatiemodule

Ga naar [roxtec.com](https://www.roxtec.com) voor uitgebreide informatie.

The product information provided by Roxtec does not release the purchaser of the Roxtec system, or part thereof, from the obligation to independently determine the suitability of the products for the intended process, installation and/or use.

Roxtec gives no guarantee for the Roxtec system or any part thereof and assumes no liability for any loss or damage whatsoever, whether direct, indirect, consequential, loss of profit or otherwise, occurred or caused by the Roxtec systems or installations containing components not manufactured by an authorized manufacturer and/or occurred or caused by the use of the Roxtec system in a manner or for an application other than for which the Roxtec system was designed or intended.

Roxtec expressly excludes any implied warranties of merchantability and fitness for a particular purpose and all other express or implied representations and warranties provided by statute or common law. User determines suitability of the Roxtec system for intended use and assumes all risk and liability in connection therewith. In no event shall Roxtec be liable for indirect, consequential, punitive, special, exemplary or incidental damages or losses.

The Roxtec products are offered and sold in accordance with the conditions of the Roxtec General Terms of Sales. The latest version of the Roxtec General Terms of Sales can be downloaded from <https://www.roxtec.com/en/about-us/about-roxtec/general-terms-of-sales/>

We reserve the right to make changes to the product and technical information without further notice. Any errors in print or entry are no claims for indemnity. The content of this publication is the property of Roxtec International AB and is protected by copyright.

This document was generated on: 2026-05-12

